

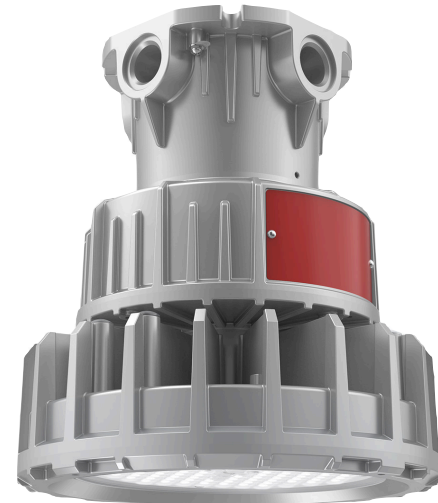
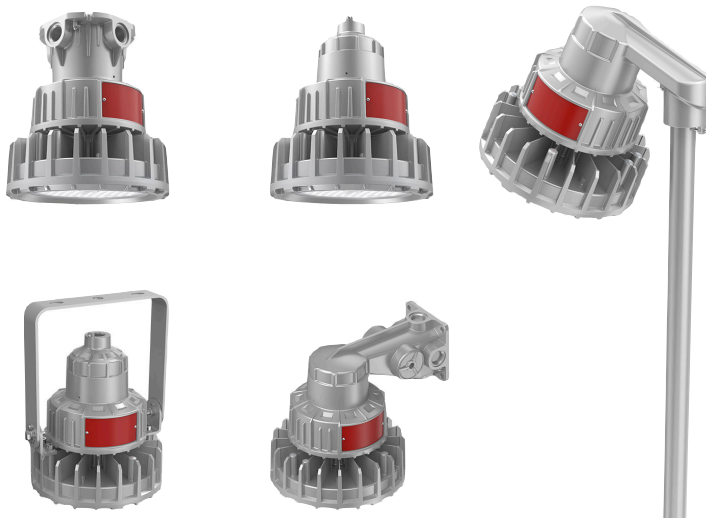
EXP-MN03

The EXP-MN03 fixture withstands explosion and fire hazards, as well as flammable gases and vapours. This LED fixture has classification ratings of CID1, CID2, CIID1, CIID2, and CIII.

Ideal for petrochemical complexes, painting facilities, offshore platforms, oil and gas complexes, and more.

KEY FEATURES:

- CID1 Groups B, C, D
- CID2 Groups B, C, D
- CIID1 Groups E, F, G
- CIID2 Groups F, G
- CIII
- Temperature Rating of **-40°C up to +65°C**
- Suitable for Marine Environments
- Anti-Corrosion Treatment
- Avoids Water Accumulation & is Easy to Clean



SPECIFICATIONS

Luminous Efficacy	140lm/W
CCT	3000K, 4000K, 5000K (Standard)
Coloured LED Options	Red, Green, Blue, Amber
CRI	Ra70 / Ra80 / Ra90
Beam Angle	120°
Input Voltage	LV: 120-277Vac HV: 277-480Vac
IP Rating	IP66
L70 Lifespan	282,900 Hours
Operating Temp.	-40°C to +65°C (-40°F to +149°F)
Driver	MOSO / Inventronics / Moons
Warranty	5 Years
Certifications	UL, cUL, CSA
Classifications	CID1 Groups B, C, D CID2 Groups B, C, D CIID1 Groups E, F, G CIID2 Groups F, G CIII

LUMENS	WATTAGE
9,800 lm	70W
8,400 lm	60W
7,000 lm	50W
5,600 lm	40W
4,200 lm	30W

MOUNTING OPTIONS

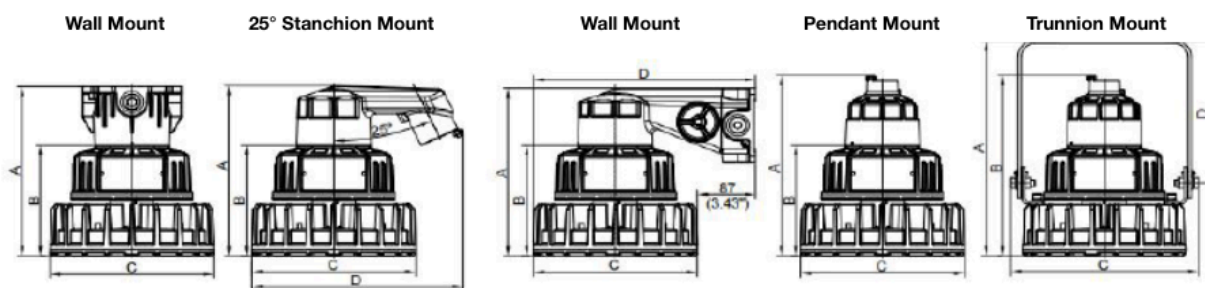


FIXTURE ORDERING MATRIX

Product Name	Wattage	Input Voltage	Lens	CCT	Classification	Options
BE-EXP-MN03	30W	LV 100-277Vac	D120	3000K	CID1/CID2/CIID1/CIID2/CIII	CM Ceiling Mount
	40W			4000K		SM Stanchion Mount
	50W			5000K (Standard)		WM Wall Mount
	60W	HV 277-480Vac		Red		PM Pendant Mount
	70W			Green Blue Amber		TM Trunnion Mount

Example: BE-EXP-MN03-30W-LV-D120-5000K-CID1-CM

DIMENSIONS & SHIPPING INFORMATION



Dimensions In/mm																		
Unit	Wall Mount			25° Stanchion Mount				Wall Mount				Pendant Mount			Trunnion Mount			
	A	B	C	A	B	C	D	A	B	C	D	A	B	C	A	B	C	D
Inch	10.8	7.0	9.8	10.8	7.0	9.8	12.6	10.7	7.0	9.8	13.2	11.5	7.0	9.8	13.7	11.5	11.2	9.1
mm	274	179	248	275	179	248	320	271	179	248	336	292	179	248	348	292	284	230



Canada

Canadian Purchase Orders ship from our Canadian warehouse located at:

1178 Bighorn Ave
Pincher Creek, AB T0K 1W0
Canada



USA

USA Purchase Orders ship from our US warehouse located at:

910 S. Industrial Park Road
Shelby, MT 59474
USA



SUPPORT:

We sell exclusively through distributors. If you are a manufacturing plant, we are happy to work with you and your supplier of choice.

Our lead time on standard items is 5-7 business days.

For IES Files, lighting layouts or further questions, please contact one of our sales representatives.